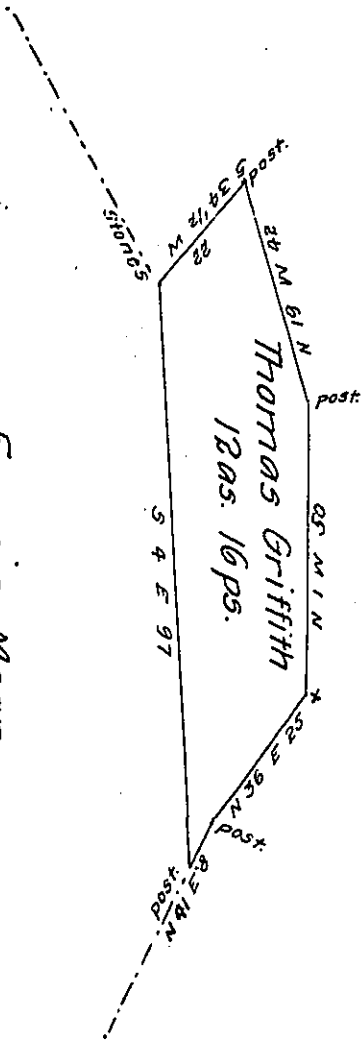


D-24-91

FRANCIS MAAN  
now  
JOHN SAVAGE.



Christopher Osburn.

Situate in Broadtop township Bedford County containing 12 acres  
 16 perches & allowance of 6 per cent for roads &c. Surveyed by  
 Sam<sup>l</sup>. Ketterman the 3<sup>rd</sup> of March 1853 in pursuance of a warrant  
 granted in the name of Thomas Griffith for 11 acres dated the 24<sup>th</sup>  
 of February 1853. Courses according to the true bearings.

Daniel Sans. C.S.

To J. Porter Brawley Esqr.

Surveyor General.

IN TESTIMONY that the above is a copy of the original remaining on file in  
 the Department of Internal Affairs of Pennsylvania, made  
 conformably to an Act of Assembly approved the 16th day of  
 February, 1833, I have hereunto set my Hand and caused  
 the Seal of said Department to be affixed at Harrisburg,  
 this nineteenth day of September 1907.

*Henry Houch*  
 Secretary of Internal Affairs.